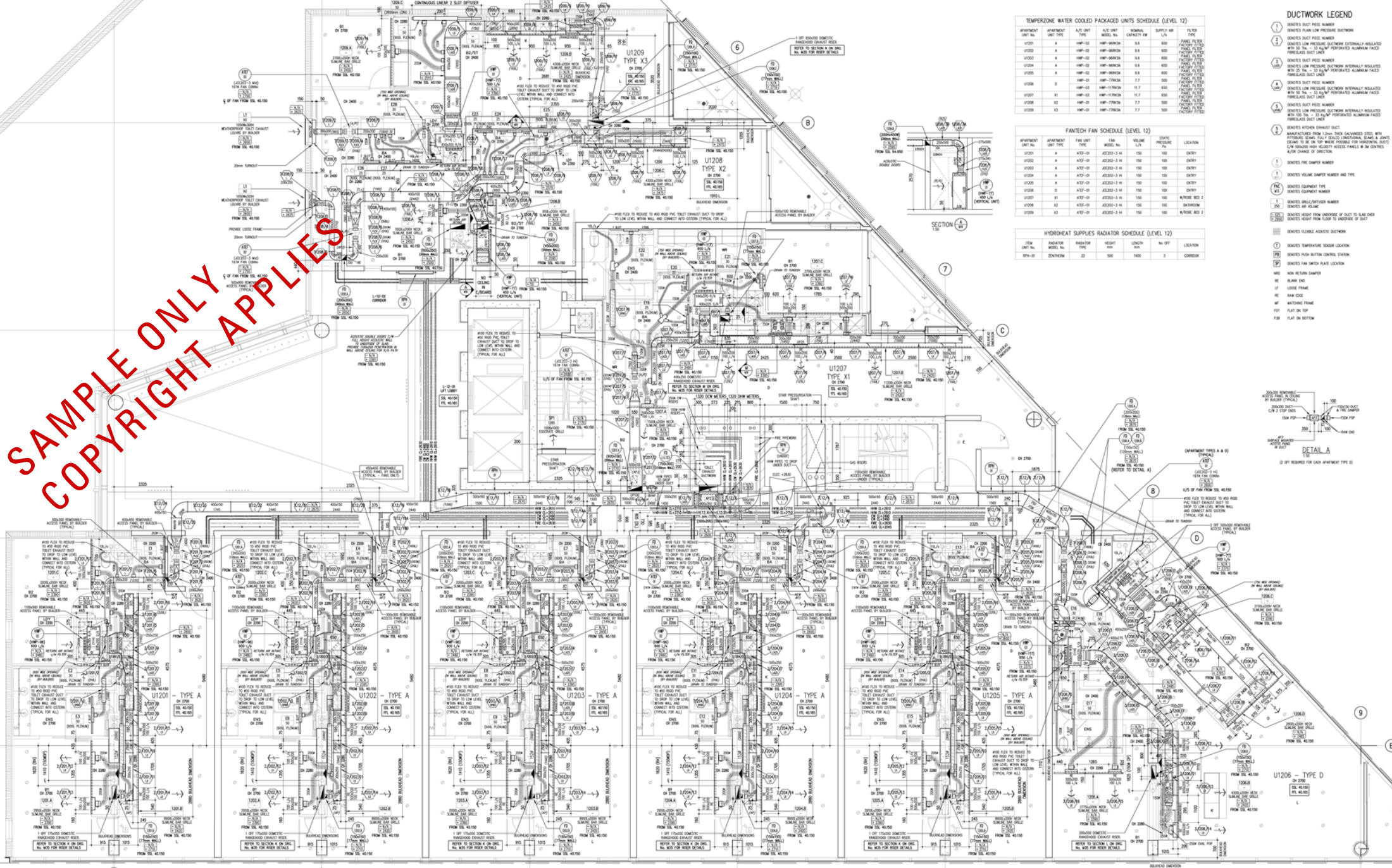


SAMPLE ONLY
COPYRIGHT APPLIES



TEMPERATURE WATER COOLED PACKAGED UNITS SCHEDULE (LEVEL 12)

APARTMENT UNIT NO.	APARTMENT UNIT TYPE	A/C UNIT TYPE	A/C UNIT MODEL NO.	REFRIG. CAPACITY kW	SUPPLY AIR L/S	FILTER TYPE
U1201	A	HWP-02	HWP-0000A	9.8	600	FANCOIL FILTER FACTORY SUPPLIED
U1202	A	HWP-02	HWP-0000A	9.8	600	FANCOIL FILTER FACTORY SUPPLIED
U1203	A	HWP-02	HWP-0000A	9.8	600	FANCOIL FILTER FACTORY SUPPLIED
U1204	A	HWP-02	HWP-0000A	9.8	600	FANCOIL FILTER FACTORY SUPPLIED
U1205	A	HWP-02	HWP-0000A	9.8	600	FANCOIL FILTER FACTORY SUPPLIED
U1206	D	HWP-01	HWP-1000A	7.7	500	FANCOIL FILTER FACTORY SUPPLIED
U1207	01	HWP-03	HWP-1000A	11.7	800	FANCOIL FILTER FACTORY SUPPLIED
U1208	K2	HWP-01	HWP-1000A	7.7	500	FANCOIL FILTER FACTORY SUPPLIED
U1209	K3	HWP-01	HWP-1000A	7.7	500	FANCOIL FILTER FACTORY SUPPLIED

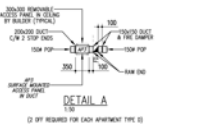
FANTECH FAN SCHEDULE (LEVEL 12)

APARTMENT UNIT NO.	APARTMENT UNIT TYPE	FAN UNIT TYPE	FAN MODEL NO.	DEAL. PRESSURE	LOCATION
U1201	A	ATX1-01	ATX201-3-14	100	ENTRY
U1202	A	ATX1-01	ATX201-3-14	100	ENTRY
U1203	A	ATX1-01	ATX201-3-14	100	ENTRY
U1204	A	ATX1-01	ATX201-3-14	100	ENTRY
U1205	A	ATX1-01	ATX201-3-14	100	ENTRY
U1206	D	ATX1-01	ATX201-3-14	100	ENTRY
U1207	01	ATX1-01	ATX201-3-14	100	WALKWAY BLD 2
U1208	K2	ATX1-01	ATX201-3-14	100	BATHROOM
U1209	K3	ATX1-01	ATX201-3-14	100	WALKWAY BLD 2

HYDROHEAT SUPPLIES RADIATOR SCHEDULE (LEVEL 12)

ITEM	RADIATOR MODEL NO.	RADIATOR TYPE	LENGTH	No OFF	LOCATION	
800-01	22000000	22	100	1400	3	COMMON

- DUCTWORK LEGEND**
- ① DENOTES DUCT PEE NUMBER
 - ② DENOTES PLAN LOW PRESSURE DUCTWORK
 - ③ DENOTES DUCT PEE NUMBER
 - ④ DENOTES LOW PRESSURE DUCTWORK EXTERNALLY INSULATED WITH 100 TA - 23 KPa PERFORMED ALUMINUM FACED FIBREGLASS DUCT LINER
 - ⑤ DENOTES DUCT PEE NUMBER
 - ⑥ DENOTES LOW PRESSURE DUCTWORK INTERNALLY INSULATED WITH 25 TA - 23 KPa PERFORMED ALUMINUM FACED FIBREGLASS DUCT LINER
 - ⑦ DENOTES HIGH DUCTWORK
 - ⑧ DENOTES HIGH PRESSURE DUCTWORK INTERNALLY INSULATED WITH 100 TA - 23 KPa PERFORMED ALUMINUM FACED FIBREGLASS DUCT LINER
 - ⑨ DENOTES HIGH PRESSURE DUCTWORK EXTERNALLY INSULATED WITH 100 TA - 23 KPa PERFORMED ALUMINUM FACED FIBREGLASS DUCT LINER
 - ⑩ DENOTES HIGH PRESSURE DUCTWORK INTERNALLY INSULATED WITH 100 TA - 23 KPa PERFORMED ALUMINUM FACED FIBREGLASS DUCT LINER
 - ⑪ DENOTES HIGH PRESSURE DUCTWORK EXTERNALLY INSULATED WITH 100 TA - 23 KPa PERFORMED ALUMINUM FACED FIBREGLASS DUCT LINER
 - ⑫ DENOTES HIGH PRESSURE DUCTWORK INTERNALLY INSULATED WITH 100 TA - 23 KPa PERFORMED ALUMINUM FACED FIBREGLASS DUCT LINER
 - ⑬ DENOTES HIGH PRESSURE DUCTWORK EXTERNALLY INSULATED WITH 100 TA - 23 KPa PERFORMED ALUMINUM FACED FIBREGLASS DUCT LINER
 - ⑭ DENOTES HIGH PRESSURE DUCTWORK INTERNALLY INSULATED WITH 100 TA - 23 KPa PERFORMED ALUMINUM FACED FIBREGLASS DUCT LINER
 - ⑮ DENOTES HIGH PRESSURE DUCTWORK EXTERNALLY INSULATED WITH 100 TA - 23 KPa PERFORMED ALUMINUM FACED FIBREGLASS DUCT LINER
 - ⑯ DENOTES HIGH PRESSURE DUCTWORK INTERNALLY INSULATED WITH 100 TA - 23 KPa PERFORMED ALUMINUM FACED FIBREGLASS DUCT LINER
 - ⑰ DENOTES HIGH PRESSURE DUCTWORK EXTERNALLY INSULATED WITH 100 TA - 23 KPa PERFORMED ALUMINUM FACED FIBREGLASS DUCT LINER
 - ⑱ DENOTES HIGH PRESSURE DUCTWORK INTERNALLY INSULATED WITH 100 TA - 23 KPa PERFORMED ALUMINUM FACED FIBREGLASS DUCT LINER
 - ⑲ DENOTES HIGH PRESSURE DUCTWORK EXTERNALLY INSULATED WITH 100 TA - 23 KPa PERFORMED ALUMINUM FACED FIBREGLASS DUCT LINER
 - ⑳ DENOTES HIGH PRESSURE DUCTWORK INTERNALLY INSULATED WITH 100 TA - 23 KPa PERFORMED ALUMINUM FACED FIBREGLASS DUCT LINER
 - ㉑ DENOTES HIGH PRESSURE DUCTWORK EXTERNALLY INSULATED WITH 100 TA - 23 KPa PERFORMED ALUMINUM FACED FIBREGLASS DUCT LINER
 - ㉒ DENOTES HIGH PRESSURE DUCTWORK INTERNALLY INSULATED WITH 100 TA - 23 KPa PERFORMED ALUMINUM FACED FIBREGLASS DUCT LINER
 - ㉓ DENOTES HIGH PRESSURE DUCTWORK EXTERNALLY INSULATED WITH 100 TA - 23 KPa PERFORMED ALUMINUM FACED FIBREGLASS DUCT LINER
 - ㉔ DENOTES HIGH PRESSURE DUCTWORK INTERNALLY INSULATED WITH 100 TA - 23 KPa PERFORMED ALUMINUM FACED FIBREGLASS DUCT LINER
 - ㉕ DENOTES HIGH PRESSURE DUCTWORK EXTERNALLY INSULATED WITH 100 TA - 23 KPa PERFORMED ALUMINUM FACED FIBREGLASS DUCT LINER
 - ㉖ DENOTES HIGH PRESSURE DUCTWORK INTERNALLY INSULATED WITH 100 TA - 23 KPa PERFORMED ALUMINUM FACED FIBREGLASS DUCT LINER
 - ㉗ DENOTES HIGH PRESSURE DUCTWORK EXTERNALLY INSULATED WITH 100 TA - 23 KPa PERFORMED ALUMINUM FACED FIBREGLASS DUCT LINER
 - ㉘ DENOTES HIGH PRESSURE DUCTWORK INTERNALLY INSULATED WITH 100 TA - 23 KPa PERFORMED ALUMINUM FACED FIBREGLASS DUCT LINER
 - ㉙ DENOTES HIGH PRESSURE DUCTWORK EXTERNALLY INSULATED WITH 100 TA - 23 KPa PERFORMED ALUMINUM FACED FIBREGLASS DUCT LINER
 - ㉚ DENOTES HIGH PRESSURE DUCTWORK INTERNALLY INSULATED WITH 100 TA - 23 KPa PERFORMED ALUMINUM FACED FIBREGLASS DUCT LINER
 - ㉛ DENOTES HIGH PRESSURE DUCTWORK EXTERNALLY INSULATED WITH 100 TA - 23 KPa PERFORMED ALUMINUM FACED FIBREGLASS DUCT LINER
 - ㉜ DENOTES HIGH PRESSURE DUCTWORK INTERNALLY INSULATED WITH 100 TA - 23 KPa PERFORMED ALUMINUM FACED FIBREGLASS DUCT LINER
 - ㉝ DENOTES HIGH PRESSURE DUCTWORK EXTERNALLY INSULATED WITH 100 TA - 23 KPa PERFORMED ALUMINUM FACED FIBREGLASS DUCT LINER
 - ㉞ DENOTES HIGH PRESSURE DUCTWORK INTERNALLY INSULATED WITH 100 TA - 23 KPa PERFORMED ALUMINUM FACED FIBREGLASS DUCT LINER
 - ㉟ DENOTES HIGH PRESSURE DUCTWORK EXTERNALLY INSULATED WITH 100 TA - 23 KPa PERFORMED ALUMINUM FACED FIBREGLASS DUCT LINER
 - ㊱ DENOTES HIGH PRESSURE DUCTWORK INTERNALLY INSULATED WITH 100 TA - 23 KPa PERFORMED ALUMINUM FACED FIBREGLASS DUCT LINER
 - ㊲ DENOTES HIGH PRESSURE DUCTWORK EXTERNALLY INSULATED WITH 100 TA - 23 KPa PERFORMED ALUMINUM FACED FIBREGLASS DUCT LINER
 - ㊳ DENOTES HIGH PRESSURE DUCTWORK INTERNALLY INSULATED WITH 100 TA - 23 KPa PERFORMED ALUMINUM FACED FIBREGLASS DUCT LINER
 - ㊴ DENOTES HIGH PRESSURE DUCTWORK EXTERNALLY INSULATED WITH 100 TA - 23 KPa PERFORMED ALUMINUM FACED FIBREGLASS DUCT LINER
 - ㊵ DENOTES HIGH PRESSURE DUCTWORK INTERNALLY INSULATED WITH 100 TA - 23 KPa PERFORMED ALUMINUM FACED FIBREGLASS DUCT LINER
 - ㊶ DENOTES HIGH PRESSURE DUCTWORK EXTERNALLY INSULATED WITH 100 TA - 23 KPa PERFORMED ALUMINUM FACED FIBREGLASS DUCT LINER
 - ㊷ DENOTES HIGH PRESSURE DUCTWORK INTERNALLY INSULATED WITH 100 TA - 23 KPa PERFORMED ALUMINUM FACED FIBREGLASS DUCT LINER
 - ㊸ DENOTES HIGH PRESSURE DUCTWORK EXTERNALLY INSULATED WITH 100 TA - 23 KPa PERFORMED ALUMINUM FACED FIBREGLASS DUCT LINER
 - ㊹ DENOTES HIGH PRESSURE DUCTWORK INTERNALLY INSULATED WITH 100 TA - 23 KPa PERFORMED ALUMINUM FACED FIBREGLASS DUCT LINER
 - ㊺ DENOTES HIGH PRESSURE DUCTWORK EXTERNALLY INSULATED WITH 100 TA - 23 KPa PERFORMED ALUMINUM FACED FIBREGLASS DUCT LINER
 - ㊻ DENOTES HIGH PRESSURE DUCTWORK INTERNALLY INSULATED WITH 100 TA - 23 KPa PERFORMED ALUMINUM FACED FIBREGLASS DUCT LINER
 - ㊼ DENOTES HIGH PRESSURE DUCTWORK EXTERNALLY INSULATED WITH 100 TA - 23 KPa PERFORMED ALUMINUM FACED FIBREGLASS DUCT LINER
 - ㊽ DENOTES HIGH PRESSURE DUCTWORK INTERNALLY INSULATED WITH 100 TA - 23 KPa PERFORMED ALUMINUM FACED FIBREGLASS DUCT LINER
 - ㊾ DENOTES HIGH PRESSURE DUCTWORK EXTERNALLY INSULATED WITH 100 TA - 23 KPa PERFORMED ALUMINUM FACED FIBREGLASS DUCT LINER
 - ㊿ DENOTES HIGH PRESSURE DUCTWORK INTERNALLY INSULATED WITH 100 TA - 23 KPa PERFORMED ALUMINUM FACED FIBREGLASS DUCT LINER



<p>REV DATE DESCRIPTION</p>	<p>CONSULTANT</p>	<p>PROJECT TRIPTYCH 8-10 KAVANAGH STREET SOUTHBANK VICTORIA</p> <p>SERVICE MECHANICAL SERVICES</p>	<p>FILE LEVEL 12 FLOOR PLAN DUCTWORK & EQUIPMENT LAYOUT</p> <p>SCALE 1:50</p> <p>DATE DWN JUNE 09</p>
	<p>FOR APPROVAL</p>	<p>CHECKED BY A1380</p> <p>DWG NO. M16</p>	<p>REVISION B</p>